



Nursery Avenue, Stoke-On-Trent, ST9 9NY.
Offers in Excess of £335,000

Whittaker Est. 1930
& Biggs

Nursery Avenue, Stoke-On-Trent, ST9 9NY.

This three-bedroom detached family home is ideally situated in the popular location of Stockton Brook and only a short walk from Greenways Primary. The property is nestled on a substantial plot, having an impressive frontage, which comprises of a large garden/driveway, providing off street parking for a number of vehicles and access to the garage.

Excellent views towards Brown Edge and beyond can be enjoyed from the frontage. Internally the property boasts a stunning hallway with vaulted ceiling, 20ft L-shaped living/dining room, two bathroom/shower rooms, 23ft integral garage, utility and well-equipped kitchen.

You're welcomed into the property via the hallway, having stairs to the first floor. Then through to the living/dining room which has ample room for both living and dining furniture, feature gas fireplace and patio doors onto the rear garden. The kitchen has a good range of fitted units to the base and eye level, granite style work surface/upstands, breakfast bar, integral dishwasher, integral microwave, gas hob, electric cooker, integrated fridge and access to the utility.

The utility has a good range of fitted base units, sink, space for a washing machine, wall mounted Worcester boiler, access to the shower room, garage and rear garden. The shower room has a corner shower enclosure, gold shower, pedestal wash hand basin and WC. The garage has up and over door, power and light connected.

To the first floor the landing provides excellent views to the frontage, three well proportioned bedrooms, with two of the rooms having fitted bedroom furniture. The bathroom has a panel bath, low level WC and pedestal wash hand basin.

Externally to the frontage is a walled and gated entrance, herringbone block paved driveway, lawn and well stocked borders. To the rear is a low maintenance garden laid to block paving. Offered for sale with NO CHAIN, a viewing comes highly recommended to appreciate this homes location, plot size, views and spacious layout.

Situation

An idyllic location offering stunning views over countryside, together with the Caudon canal just a short distance away, which provides many countryside walks. Greenways Primary School is located a short walk away and Pubs/restaurants such as Ego, Lockside and the Sportsman are also within walking distance. Easy commuting to the Potteries, Leek and Congleton and access to the Motorway Network.



Entrance Hallway

Wood floor, UPVC double glazed door and window to the front elevation, stairs to the first floor, vaulted ceiling.

Living/Dining Room 20' 4" x 14' 0" (6.19m x 4.27m)

UPVC double glazed window and UPVC double glazed bay window to the front elevation, two radiators, UPVC double glazed patio doors to the rear elevation, brick fireplace with a living flame gas fire, wood beams, wall lights.

Breakfast Kitchen 17' 0" x 9' 11" (5.17m x 3.01m)

Range of fitted units to the base and eye level, granite style worksurfaces and upstands, breakfast bar, five ring gas hob, electric fan assisted oven, electric grill, extractor fan, integral microwave, sink with chrome mixer tap, integral dishwasher, integral fridge, UPVC double glazed window to the side and rear elevation.

Utility 13' 6" x 7' 3" (4.11m x 2.21m)

Range of fitted units to the base and eye level, granite style worksurfaces and upstands, UPVC double glazed window to the rear elevation, radiator, UPVC double glazed door to the rear elevation, gas fired boiler, fully tiled, plumbing for washing machine, access to a shower room, integral garage and rear garden.

Shower Room 10' 4" x 3' 8" (3.16m x 1.13m)

Corner shower cubicle with gold coloured shower, pedestal wash hand basin, low level WC, heater ladder radiator, window to the side elevation.

Garage 23' 10" x 9' 3" (7.27m x 2.83m)

Up and over door, light and power connected.

First Floor

Landing

UPVC double glazed window to the front elevation, storage cupboard off with fitted shelving.

Bedroom One 10' 8" x 21' 7" (3.25m x 6.58m)

Two UPVC double glazed windows to the front elevation, fitted wardrobes, dressing table, two radiators.

Bedroom Two 16' 1" x 8' 11" (4.91m x 2.73m)

Two UPVC double glazed windows to the rear elevation, two radiators, fitted dressing table and bedsides table, fitted wardrobes and overhead storage.

Bedroom Three 16' 5" x 8' 7" (5.00m x 2.61m)

UPVC double glazed window to the rear elevation, radiator.

Bathroom 5' 9" x 10' 2" (1.74m x 3.09m)

UPVC double glazed window to the rear elevation, radiator, panel bath, traditional mixer tap with shower attachment, low level WC, pedestal wash hand basin, chrome heated ladder radiator, fully tiled.

Externally

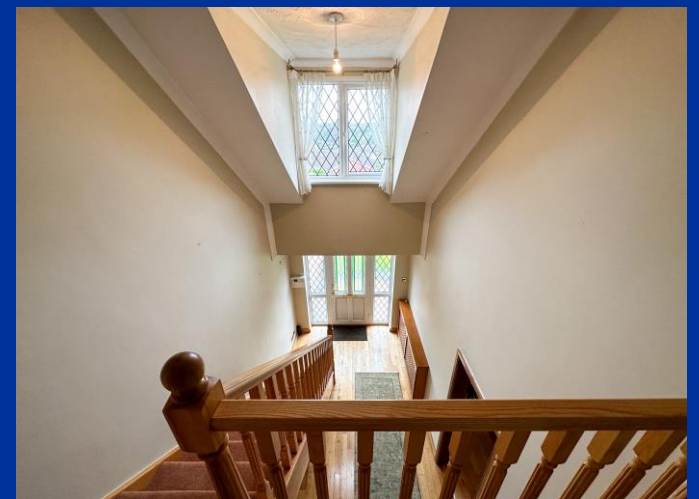
To the front: herringbone block paving, area laid to lawn, hedged boundaries, well stocked borders, courtesy lighting, access to garage, gated access and wall boundary. To the rear: walled boundary, block paved patio, well stocked raised borders, courtesy lighting.



Note:
Council Tax Band: E

EPC Rating: D

Tenure: believed to be Freehold







GROUND FLOOR



1ST FLOOR



Whilst every attempt has been made to ensure the accuracy of the floorplan contained here, measurements of doors, windows, rooms and any other items are approximate and no responsibility is taken for any error, omission or mis-statement. This plan is for illustrative purposes only and should be used as such by any prospective purchaser. The services, systems and appliances shown have not been tested and no guarantee as to their operability or efficiency can be given.
Made with Metropix ©2023



Directions

IMPORTANT: Whittaker & Biggs for themselves and for the vendors or lessors of this property whose agents they are give notice that the particulars are produced in good faith and are set out as a general guide only and do not constitute any part of a contract and no person in the employment of Whittaker & Biggs estate agents has any authority to make or give any representation or warranty in relation to this property. The agent has not tested any apparatus, equipment, fittings or services and so cannot guarantee they are in working order, or fit for their purpose. The agent would also like to point out that the majority of the photographs used on their brochures and window displays are taken with non standard lenses.

45-49 Derby Street
Leek
Staffordshire
ST136HU
T: 01538 372006
E: leek@whittakerandbiggs.co.uk

www.whittakerandbiggs.co.uk

Est. 1930
**Whittaker
& Biggs**